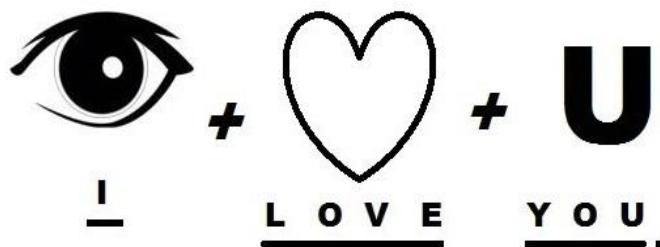


# Create Your Own Rebus

A "Rebus" is...

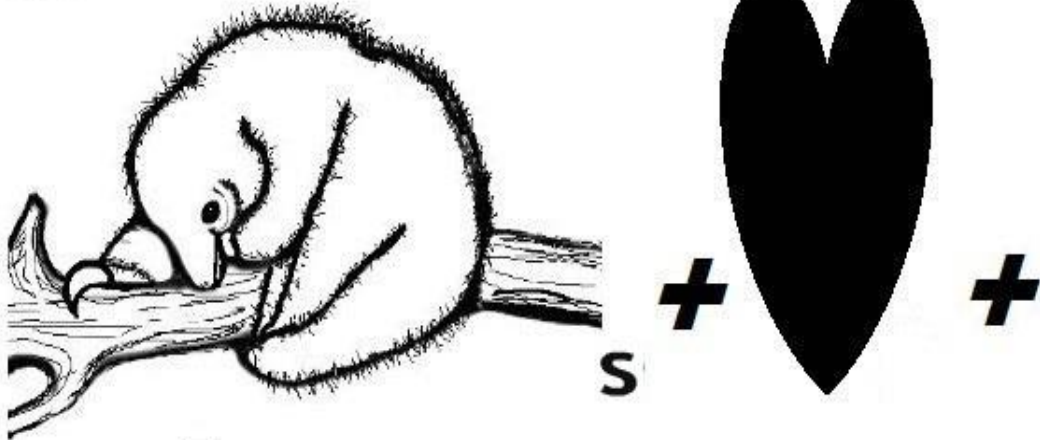
a **fun** way to send messages to each other, using rebus puzzles. Not everyone can do it!



Put together the pictures, letters, symbols and words to come up with the sentences to solve the puzzles. The lines tell you how many words are in the sentences to be solved. If you have really hard time solving the puzzles, you can check the last page for the hints.

Name  Date \_\_\_\_\_

SILKY



2 + (OP) +



+



Silky

Anteaters

Love

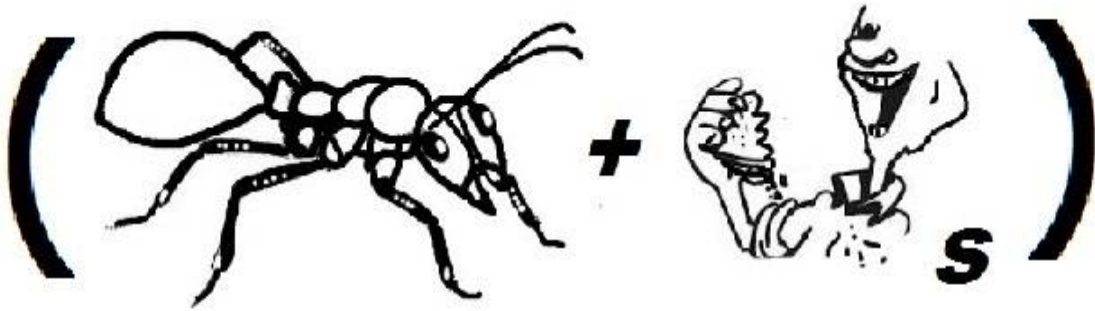
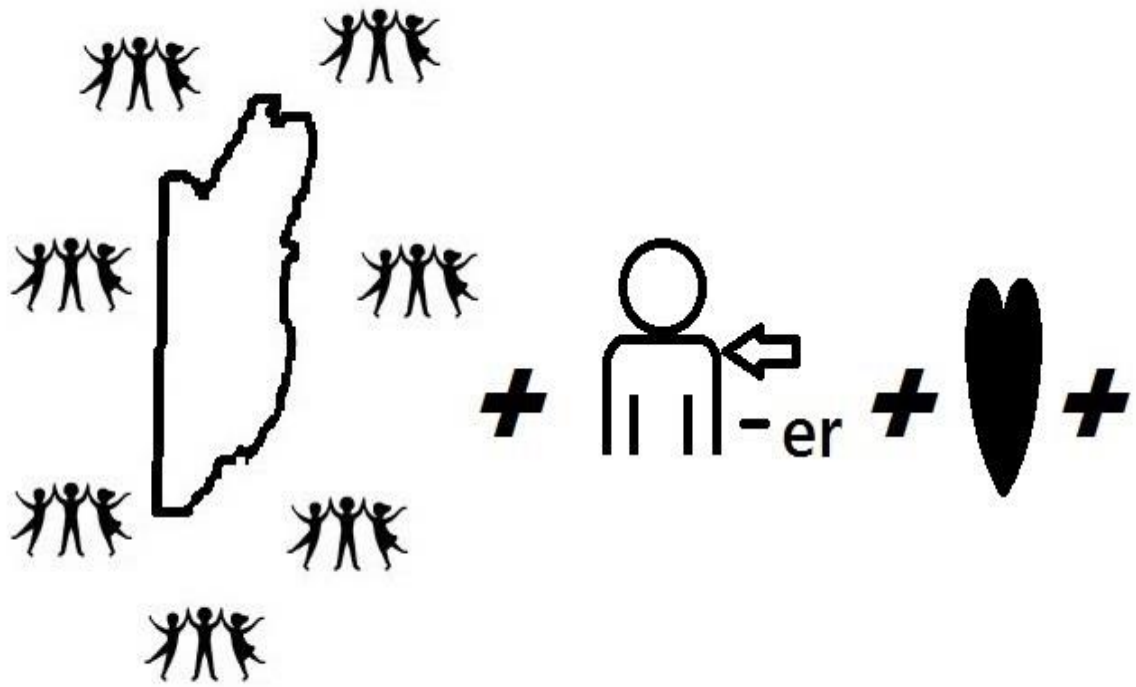
To

Go

Up

Trees

.



People

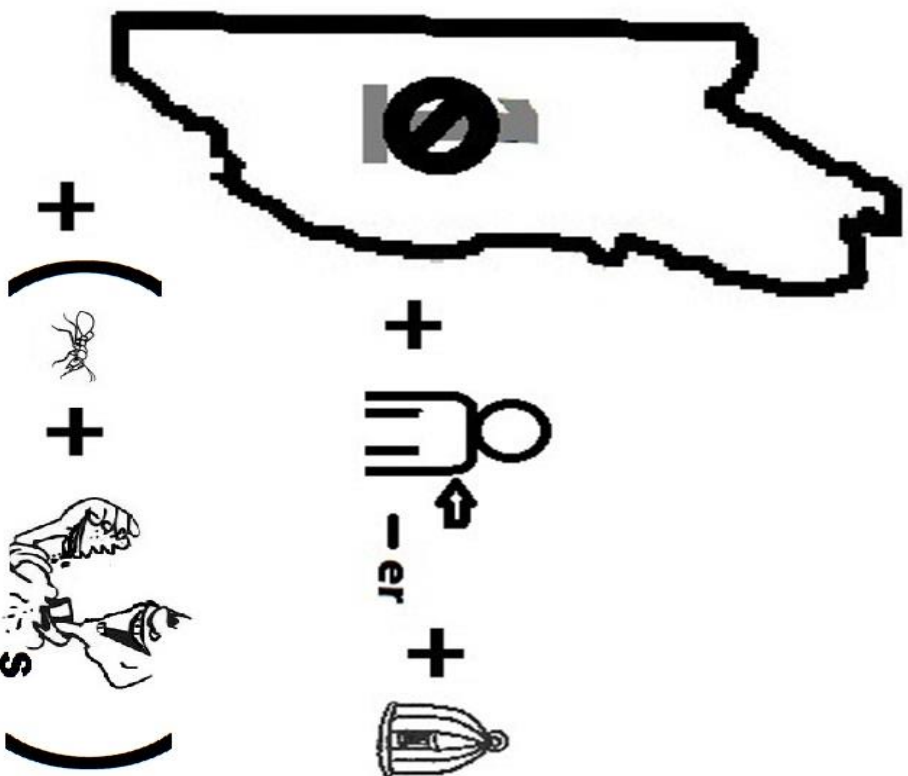
Around

Belize

Should

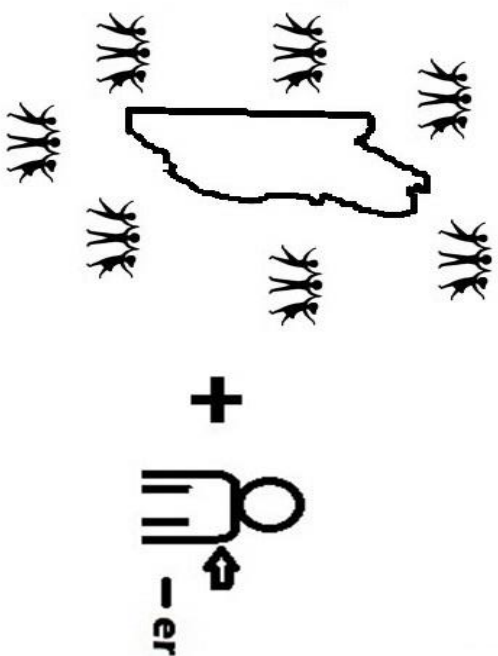
Love

Anteaters



No One In Belize Should

Cage Anteaters



People Around Belize

Should Love Helping  
Animals In Belize

**HINTS**

H  
 E  
 L + ing  
 P

(OP)

2

s

People Animals Should Love Up Helping Anteater To	Go Trees Cage Animals No One Belize Around In
--	--

**CREATE YOUR OWN REBUS**

Use pictures, letters, symbols and words to create your own rebus puzzle below. Your rebus must promote protection and saving of the wildlife!  
 It is a fun way to send messages to each other, using rebus puzzles. Not everyone can do it!

**Will Vary Per Child**